

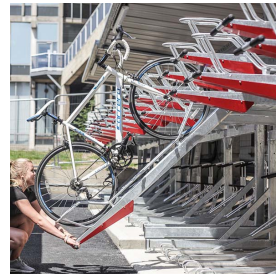


EVEREST GAS-ASSISTED DOUBLE DECKER CYCLE RACK

Product Code: SFD411



INSTALLATION AVAILABLE



PRODUCT DESCRIPTION

The Double Decker Cycle Racks is the perfect storage solution where space is at a premium, this a cost effective option allowing you to have double the amount of Cycle Racks. This style of Cycle Rack is very popular within new developments of apartment blocks, housing and offices.

The Gas-Assisted Double Deckers offer ease of use when pulling down the upper bracket which offers a noise reduction and alleviates safety concerns

- * Gas-assisted lifting
- * Tested to 20,000 movements
- * Over 30,000 installed

SPECIFICATIONS

Height	2750 mm
Diameter	mm
Weight	100 kg
Fixing	Surface Mounted
Material	Steel