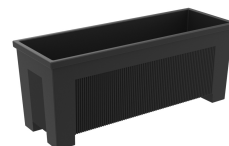




## ONA CAST IRON FLOWER PLANTER

Product Code: SFD629



### PRODUCT DESCRIPTION

The Ona Flower Planter is made of ductile cast iron and is oxiron painted. Available in 3 different dimension.

The Ona Planter is left free standing but has significant weight to hinder movement.

#### Size options available:

- 750x450x400mm - as standard
- 700x700x500mm
- 1000x300x400mm

Contact us to discuss options.

### SPECIFICATIONS

Weight	60.00 kg
Length	750mm
Width	450mm
Height	400mm
Fixing	Surface Mounted
Material	Cast Iron
Colour	Galvanised